



**PIEDMONT**  
COMMUNITY COLLEGE

# **GIVING CREDIT WHERE CREDIT IS DUE**

Presented by:

Dr. Barbara Buchanan, Ph.D, VP, Instruction/CAO

Alisa Montgomery, MSN, RN, Dean, Health & Public Safety

# ADULT LEARNERS



- **Self-Concept**
- **Experience**
- **Readiness to Learn**
- **Problem Centered**
- **Internal Motivation**
- **Need to Know**
- **Busy**

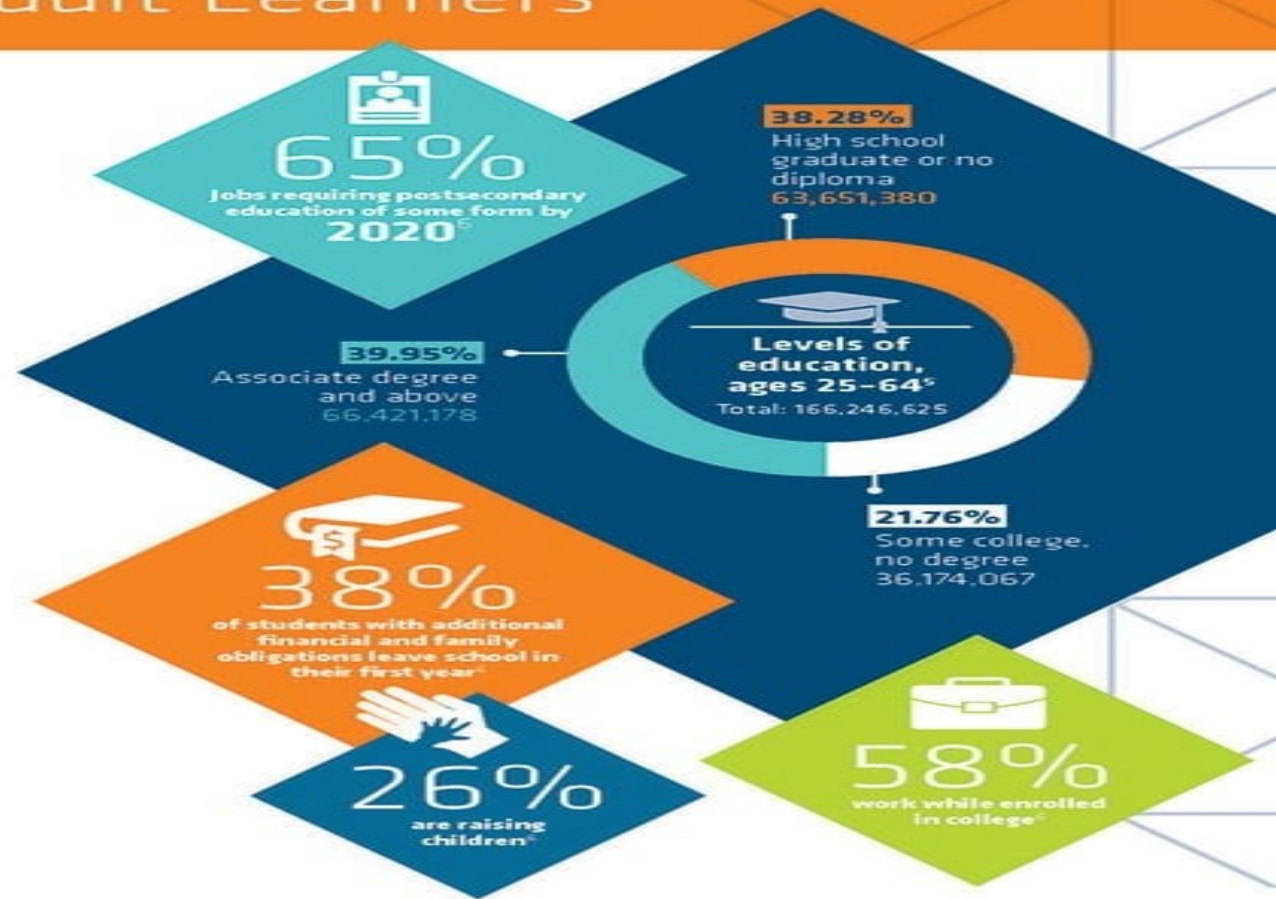
# Fast Facts on Adult Learners

**85%**  
of Americans enrolled in postsecondary institutions are **"non-traditional" learners.**<sup>1</sup>

**More than 1/4**  
of US college students are taking at least one **online course.**<sup>2</sup>

**America**  
now ranks a **disappointing 11th** in global postsecondary attainment.<sup>4</sup>

**The U.S. needs 10.9 million degrees by 2020.** If we put all of our efforts into the traditional population and improve those outcomes dramatically, we might expect to create 3.7 million new degree earners. **The gap of 7 million can only be met by increasing adult learners' educational attainment.**<sup>7</sup>



<sup>1</sup> U.S. Department of Education, Institute of Education Sciences, National Center for Education Statistics, 2011.  
<sup>2</sup> Babson Research Survey Group and Quahog Research Group, LLC, Grade Level-Tracking Online Education, 2015.  
<sup>3</sup> Georgetown University Center on Education and the Workforce, 2012.  
<sup>4</sup> Organization for Economic Co-operation and Development, Statistical Data, 2016.  
<sup>5</sup> US Census Bureau, American Community Survey, 2013.  
<sup>6</sup> Lumina Foundation, "Today's Reality", 2016.  
<sup>7</sup> Lumina Foundation, "Stronger Nation Report", 2016.

# ADULT LEARNERS



## Experience

- **Work**
- **Life**
- **Military**
- **Community/Volunteer**

# What is Credit for Prior Learning?



**Credit for Prior Learning**

**Experiential Learning**

**Prior Learning Assessment**

“Credit for prior learning (CPL) is a term for various methods that colleges, universities, and other education/training providers use to evaluate and formally recognize learning that has occurred outside of the traditional academic environment. It is used to grant college credit, certification, or advanced standing toward further education or training.”

<https://www.cael.org/lp/cpl-pla>

# Benefits of CPL: Student



## SAVES TIME

Adult degree earners  
with 12 or more CPL  
credits saved  
9 to 14 months



## SAVES MONEY

Adult students who  
earned CPL saved \$1,500  
to \$10,200 in tuition



## COMPLETION

Adult students who  
earn CPL are 17%  
more likely  
To graduate



## EMPOWERS STUDENTS

Improves  
self-confidence by  
validation

# Benefits of CPL: College



## INCREASED COMPLETION RATE

17% more likely to complete



**COLLEGE CHOICE**  
Opportunity for CPL  
strongly influences  
decision about where  
to attend



**ENROLL IN MORE CREDITS**  
CPL earning students  
take an average of  
17 more course credits  
(persistence and retention)

# TYPES OF CPL

- CONTINUING EDUCATION
- PROFESSIONAL DEVELOPMENT
- WORK EXPERIENCE
- PRIOR COURSEWORK
- CHALLENGE EXAMS
- LIFE EXPERIENCE



- MILITARY EXPERIENCE
- INDUSTRY RECOGNIZED CREDENTIALS
- HIGH SCHOOL CREDIT
- APPRENTICESHIP
- PORTFOLIO



# A STUDENT STORY: LOYCE

<https://www.youtube.com/watch?v=cE7pYEEPJ7w&t=41s>



# PROCESSES



POLICY

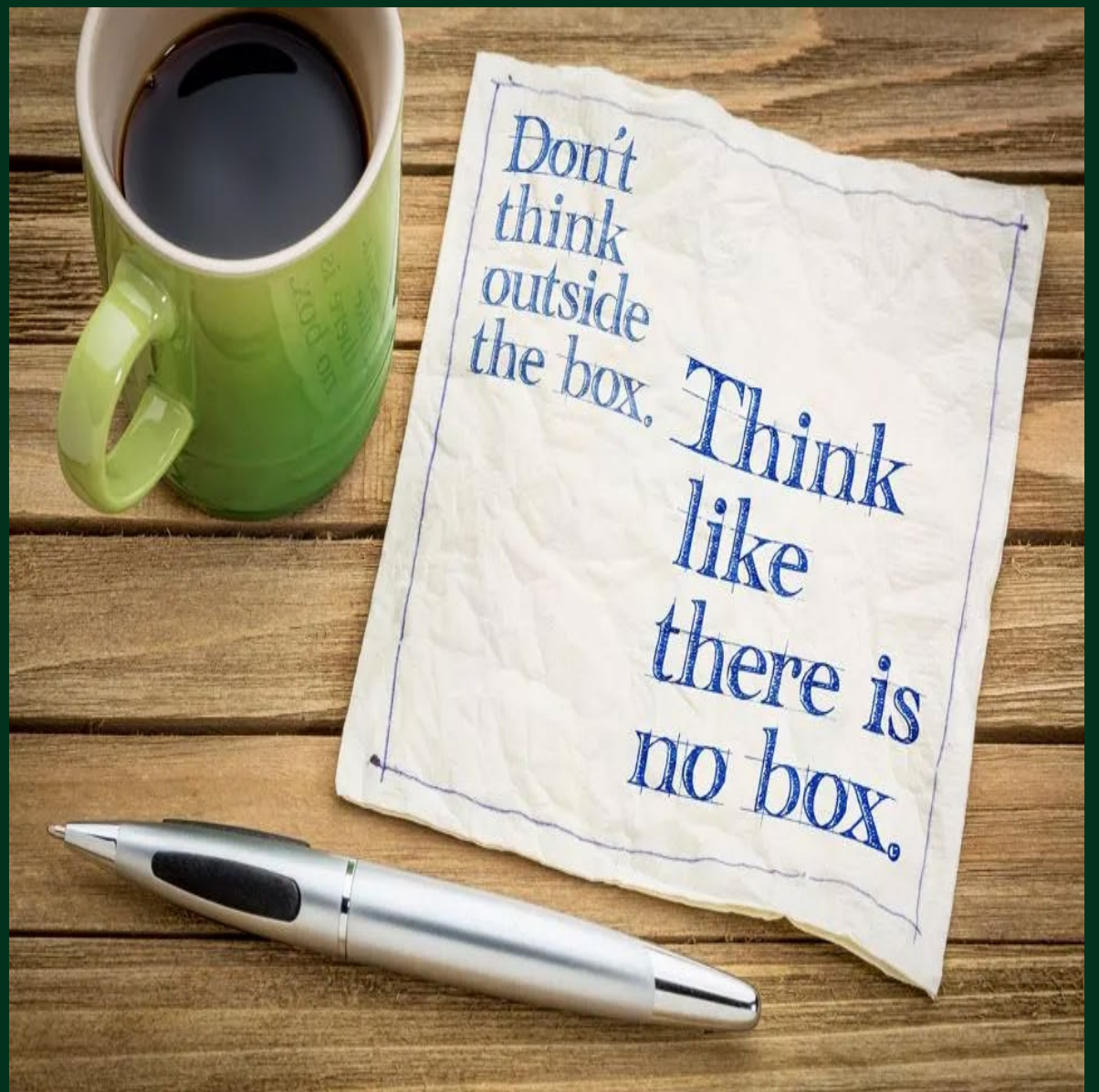


PROCEDURE



FORMS

- SME feedback
- NCCCS approved crosswalks
- Approvals from Curriculum Comm and BOT
- Post Crosswalk to website
- Deans send approvals to registrar to award credit





# RESOURCES

[NCCCS WEBSITE CPL PAGE](#)

[PCC PRIOR LEARNING CREDIT](#)

[CAEL WEBSITE](#)

[ACE WEBSITE](#)

# **THINK OUTSIDE THE CLASSROOM: Your Students Do!**

Learning happens in a classroom, and also in a workplace. It happens in a lecture hall, and also in an office building, in a fire station, or at a factory. It happens in a study group, and also on a military base in a hospital, or even in a living room.

# STUMBLING BLOCKS

- COMMUNICATION
  - Internal
  - External
- AWARENESS
  - Students
  - Advisors
  - Community members
  - Employers
- PUSHBACK
  - Losing FTE
  - Losing revenue
  - Faculty hesitation
    - Job security
    - “My way”



# QUESTIONS



- Contact us:

- [Barbara.Buchanan@piedmontcc.edu](mailto:Barbara.Buchanan@piedmontcc.edu)
- [Alisa.Montgomery@piedmontcc.edu](mailto:Alisa.Montgomery@piedmontcc.edu)





**PIEDMONT**  
COMMUNITY COLLEGE

*your hometown*  
**COLLEGE**